

The Secret to Maximizing Virtualization ROI in the Dynamic Data Center



Hypervisor Manager



Physical Servers



FC Switch



Array

BalancePoint

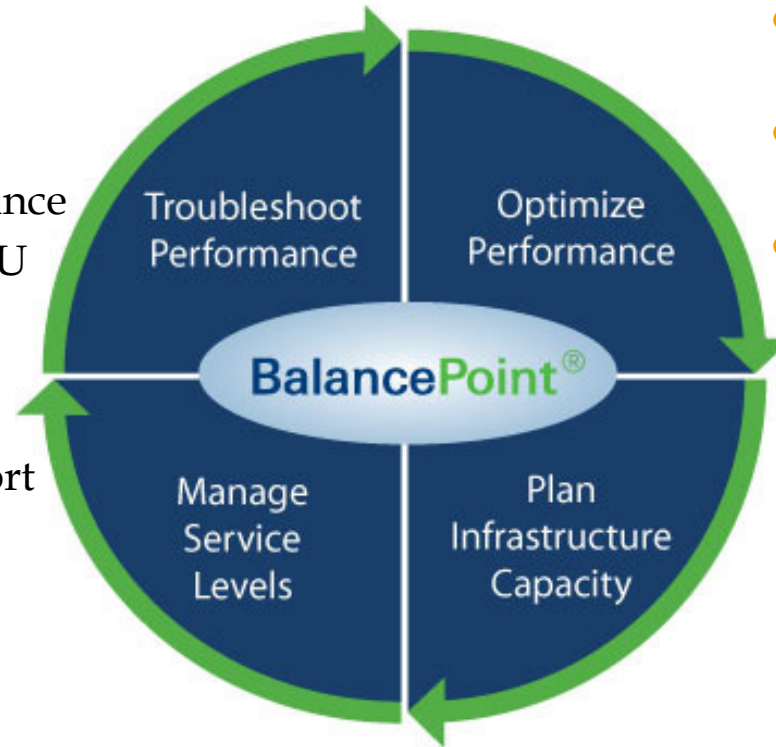


Troubleshoot

- Identify bottlenecks, contention
- Measure & baseline an app's system performance
- Determine optimal CPU efficiency for each VM

Manage

- Predict, alert, and report on performance and capacity
- Prove service level adherence
- Generate chargeback information

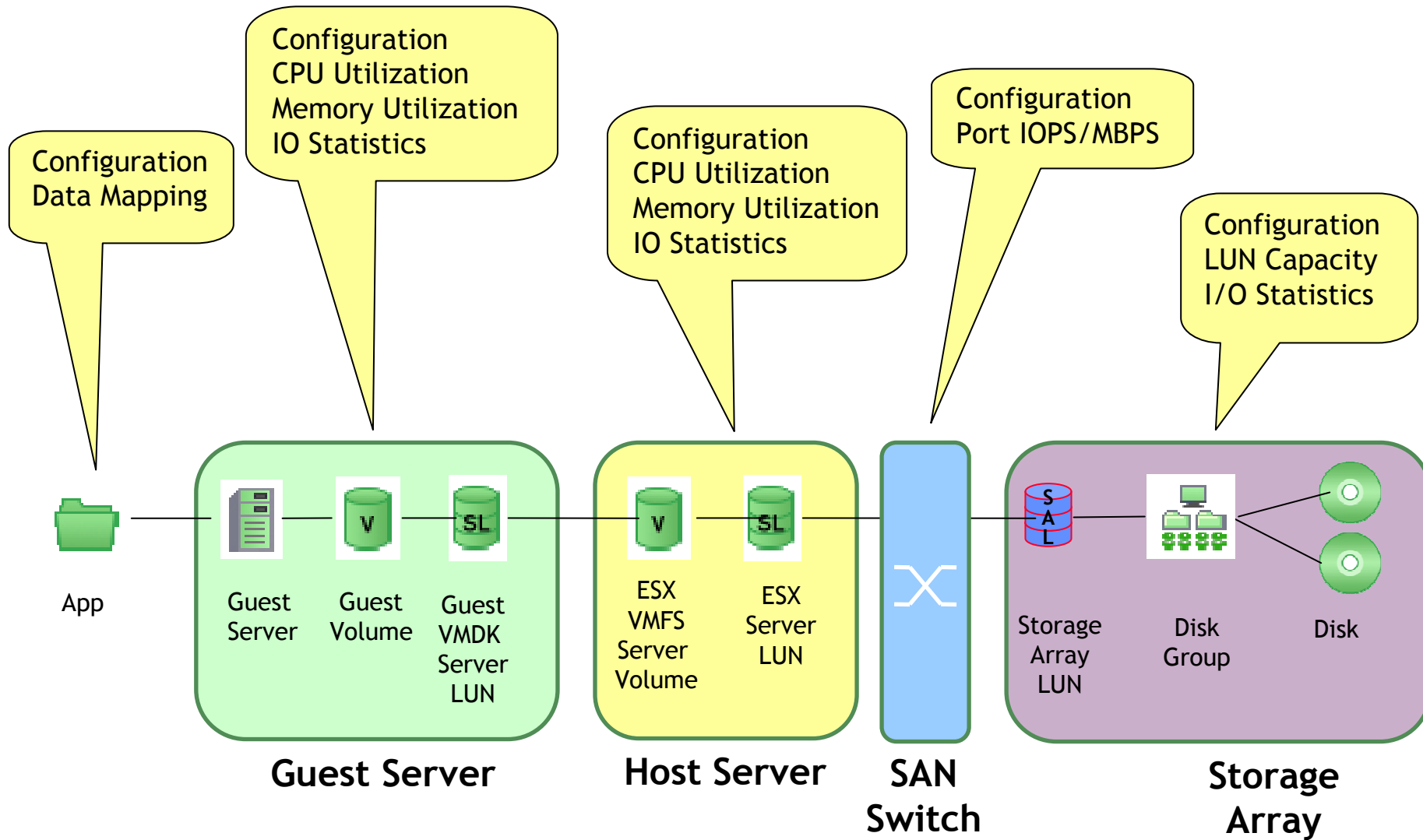


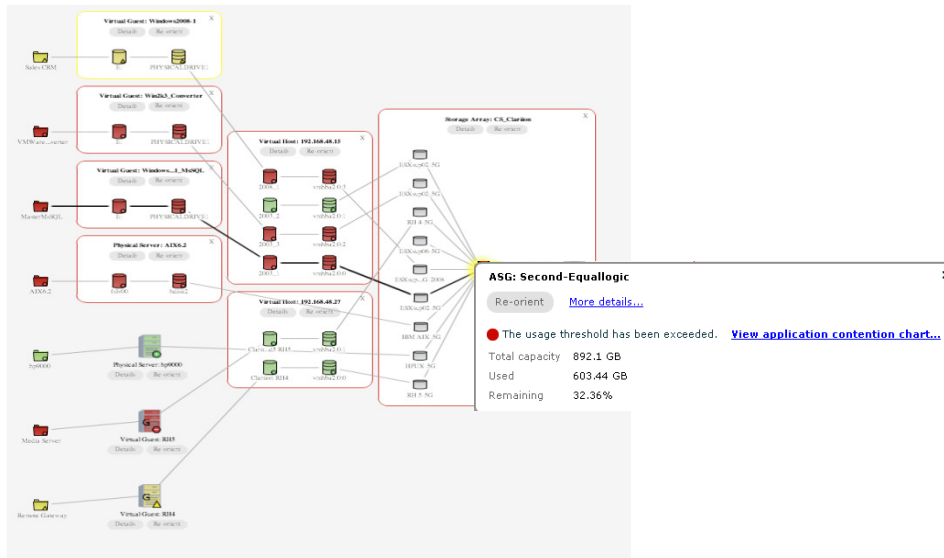
Optimize

- Determine optimal size of the VM for each app
- Avoid over- or under-allocating resources
- Enable effective use of resource pools

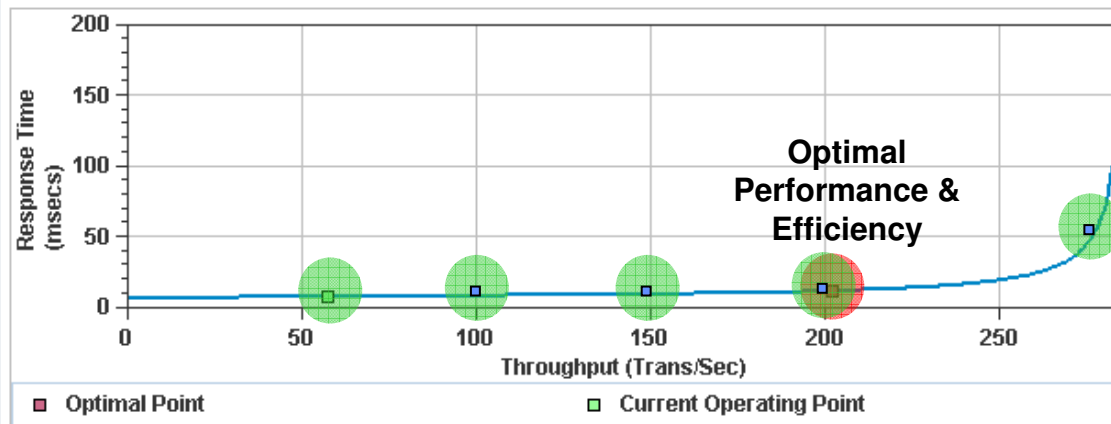
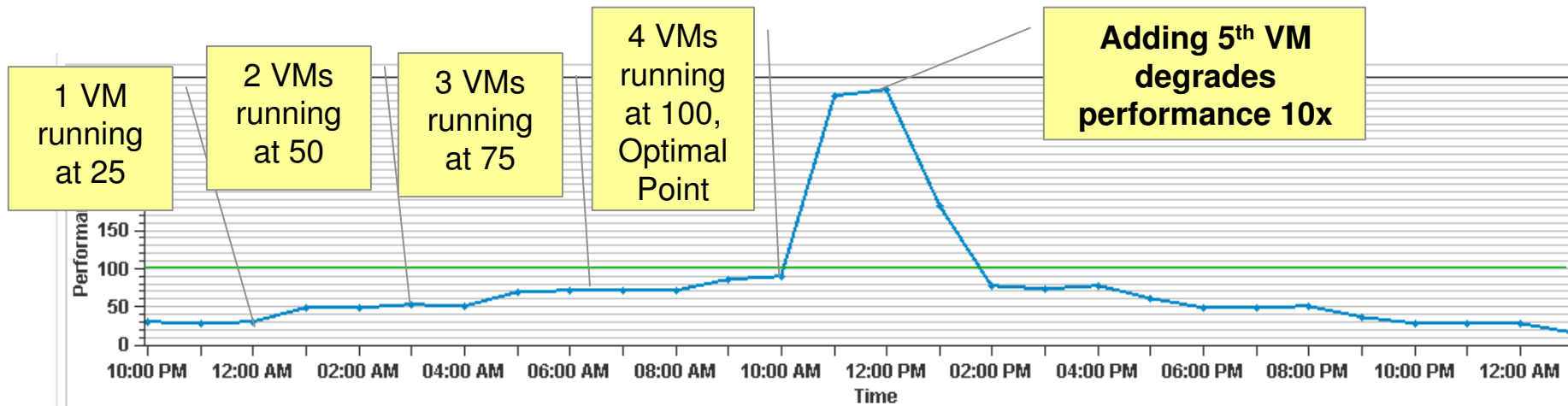
Plan

- Shows resource hogs per VM at any point in time
- Identify available hosting
- Reclaim unused resources
- Load balance clusters and resource pools
- Plan total cluster capacity vs utilization



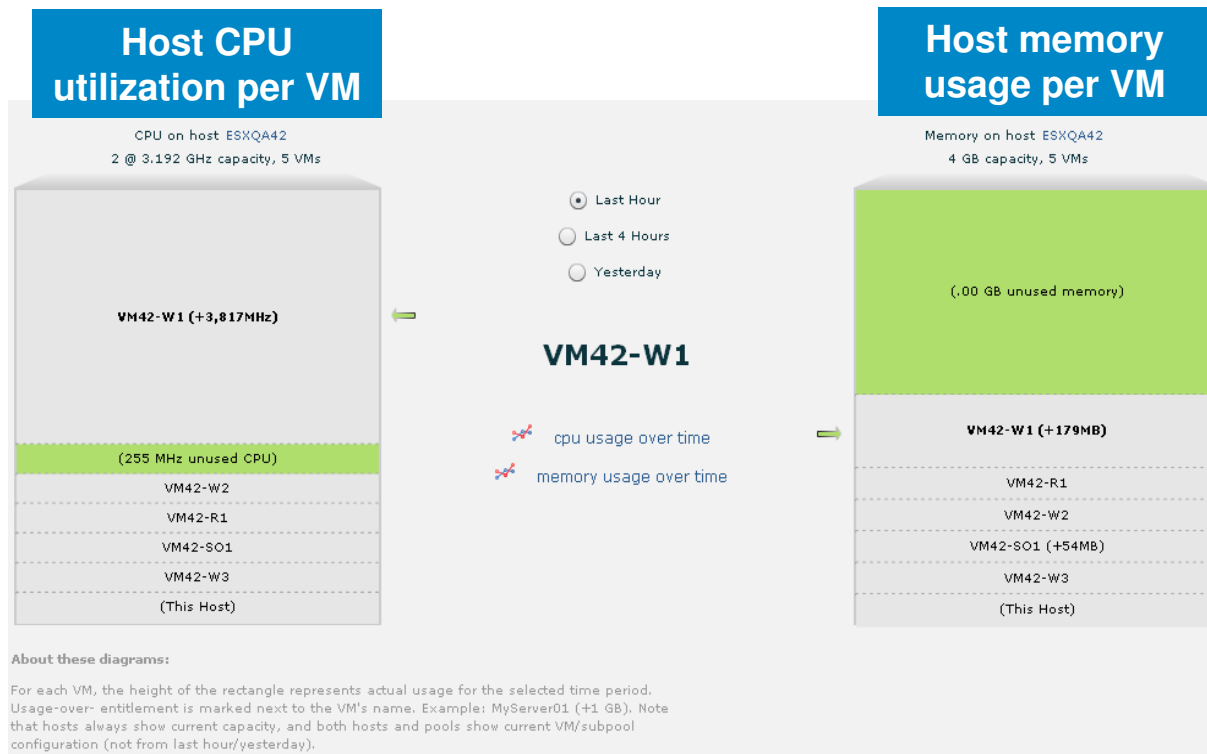


- Each element mapped from app to server to storage
- Status reflected thru color-coded interactive topology map
- Drill down for deep analysis
- Monitor and correct contention across VMs, servers and storage

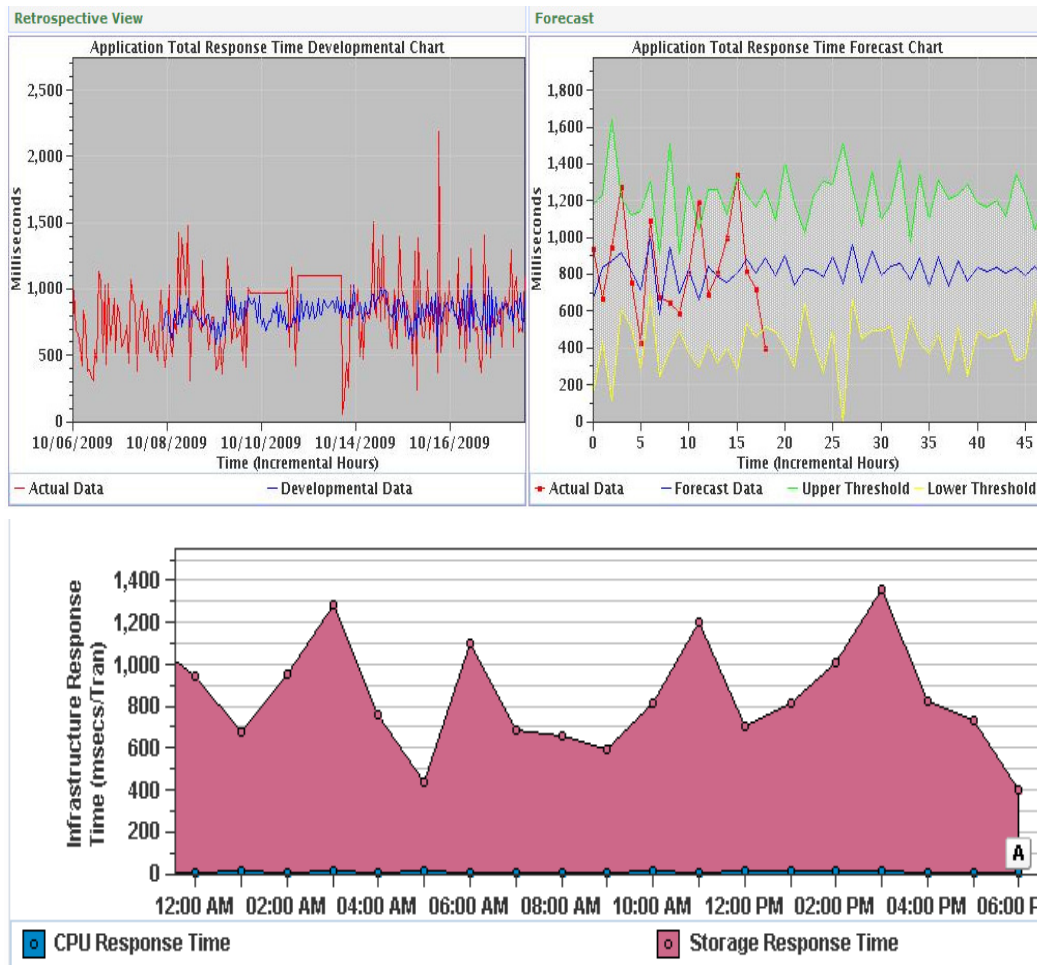


Time Stamp: 06/14/2009 11:00:00 PM
 Performance Index: 28.44
 Application CPU Utilization: 9%
 Avg. Throughput: 57.46 Trans/Sec
 Optimal Throughput: 202.03 Trans/Sec
 Avg. Overall Response Time: 7.02 msecs
 Optimal Overall Response Time: 11.04 msecs
 Effective Utilization: 19.95%

Manage PI to 100 to Get the Most Economical Performance



- Shows the “heavy hitters” at point in time
- Helps correlate the big CPU and memory “utilizers”
- Assists with entitlement settings
- Suggests resource pooling opportunities



- Visualize and proactively understand if Infrastructure Response Time is normal:
 - Compares normal based on standard deviation (95th percentile)
 - Alerts when above or below to warn of applications becoming unhappy
 - Leads to proactive bottleneck detection

The image displays a collection of six different scorecard reports generated by BalancePoint™. Each report provides detailed performance and capacity data for various system components. The reports include:

- Application Scorecard:** Overview of application performance metrics.
- Storage Scorecard:** Details on storage usage and health.
- Server Scorecard:** Summary of server performance across multiple metrics.
- Server Chargeback Report:** Breakdown of resource usage and associated costs.
- Server LUN Scorecard:** Performance and capacity data for individual Logical Unit Numbers (LUNs).
- Virtual Machine Scorecard:** Detailed performance metrics for virtual machines, including CPU, memory, and storage usage.

- Improve Operations team communication
 - Eliminate fingerpointing
- Get a 360° view of infrastructure health
 - 6 Automated Scorecards provide consistent metrics
 - Dozens of drill down reports
- Accurately forecast and plan new capital investment

Assessment

- Installation von BalancePoint (Remote)
- Datensammlung: 14 Tage
- Auswertung/ Analyse der Daten via WebEx
- 5TB Lizenz verbleiben beim Kunden
- Preis: EUR 9.800,- zzgl. MwSt.

Fragen ?

<http://www.basis.biz>