

Innovative  
Scalable

**StoreAge**  
networking technologies

StoreAge Networking Technologies Inc.

One Technology Drive, Building C515,  
Irvine, CA 92618 USA

Tel: 949-754-0640 Fax: 949-754-0645

StoreAge Networking Technologies Ltd.

63 Bar-Yehuda Rd., Neshar 36651, Israel

Tel: +972-4-8203454 Fax: +972-4-8203464

E-mail: [info@StoreAge.com](mailto:info@StoreAge.com)

The Virtualization Architects

## Additional StoreAge SVM Solutions

Enhance the capabilities of StoreAge SVM solutions - **multiView**, **multiCopy** and **multiMirror** - with the following optional add-on modules:

### SVM App-Pack™ for Windows

Integrates SVM applications with storage-intensive, Windows-based applications for creating data-consistent "application aware" snapshots and copies. Supports SQL Server 2000, Exchange Server 2000 and Oracle 9i. Includes CLIs for creating policy-based scripts that conform to individual business requirements, and integrates with Windows' Scheduled Task Manager for automatic script execution at user-defined intervals.

### SVM Report Generator™

A powerful tool for analyzing storage resources, the SVM Report Generator collects both current and historical data to assist in trend analysis, demand forecasting and much more. A broad range of reports enables administrators to determine the physical location of virtual devices, analyze host storage resources and consumption patterns, produce connectivity checklists for verifying LUN masking and zoning definitions, calculate capacity utilization and host capacity allocations, generate historical storage utilization overviews and more.

[www.StoreAge.com](http://www.StoreAge.com)

© 2005, StoreAge Networking Technologies Ltd.  
All rights reserved.  
Company or Product names may be the property of their respective owners.

© Givat Eilat Design Studio [www.studioge.com](http://www.studioge.com)

SUB0014

Maximize uptime. **Ensure** business continuity.  
Drive down costs.

As the use of Storage Area Networks (SANs) continues to grow, many organizations are not realizing the full benefits that SANs offer. The unanticipated complexity of managing and protecting the SAN presents major challenges to many IT departments.

Plus, as the amount of data continues to grow, traditional tape

or disk backup is not able to keep pace or provide the necessary levels of data protection.

Nevertheless, there is a solution. StoreAge provides a network-based solution for centrally managing and protecting multi-vendor storage SAN infrastructures.

### Network-Based Storage Management

Regularly upgrading your computing infrastructure with new equipment is often a painful process. However, StoreAge solutions operate at the network level (rather than inside servers or storage devices), enabling older IT equipment to be retired without replacing

your management tools. This provides a uniform method for managing multiple generations of equipment while ensuring high performance, excellent scalability, fault tolerance and easy portability to new equipment.

### Reduced TCO with Centralized Storage Management

With its innovative, "distributed" architecture, StoreAge's SVM™ (Storage Virtualization Manager) provides centrally managed storage pooling and virtual volume allocations for the entire SAN. SVM substantially improves the management of enterprise-class storage networks, reducing administration costs and improving

utilization of expensive storage resources. SVM operates in a heterogeneous SAN environment, which can include servers and storage from various vendors. Storage can be flexibly allocated to the servers - as needed.

### Non-Disruptive, Multi-Tiered Data Replication

Most organizations create copies of their data on a daily basis for use in backup, restore, application testing and other critical activities. Unfortunately, replicating data is often highly disruptive, typically involving application downtime and/or significant resource consumption.

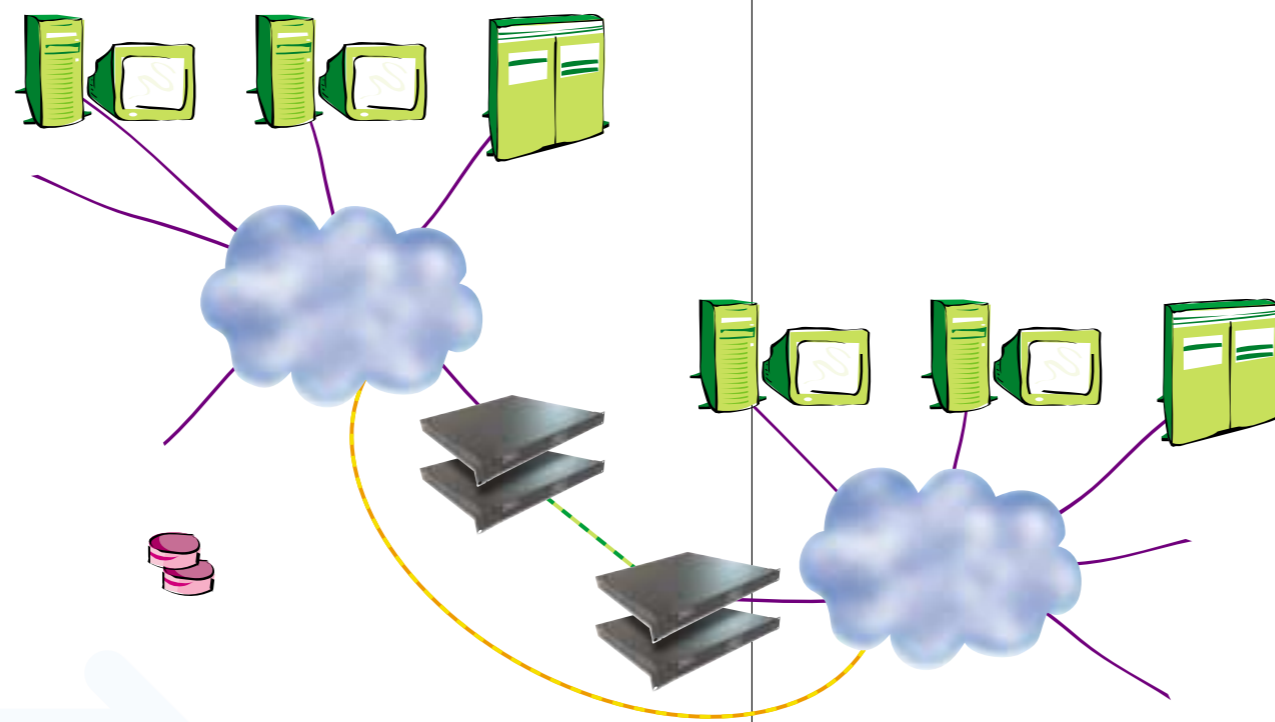
With StoreAge, data replication is a non-disruptive event that enhances your productivity and maximizes application uptime. Multiple levels of data replication can be performed "in the background" without disrupting normal operations - ranging from instant snapshots, to real-time data migration, to mirroring data between data centers.

### Business Continuity and Disaster Recovery

StoreAge provides an exceptionally affordable, vendor-independent mirroring solution to meet your Disaster Recovery requirements. StoreAge eliminates the typical "vendor lock-in" scenario by

replicating data from any storage device, to any storage device, either locally or remotely, while using inexpensive low-bandwidth connections.

Scalable  
Innovative



## multiView™ Automated, Instant, Low-Capacity, Point-in-Time Snapshots

multiView creates instant, disk-based, low-capacity snapshots of any data on any storage device at any location. These readable/writable copies of production data are non-disruptively created while your applications remain online. Snapshots can be generated automatically on a user-defined schedule, or on-demand whenever needed. Snapshots can be used in a variety of tasks, such as:

- **Rapid Data Restore** - In minutes, enabling rapid resumption of normal business activities.
- **Enhanced Data Protection** - Frequent snapshots throughout the day can supplement daily backups to tape or disk.
- **Zero-Window, Zero-Impact Backup** - Snapshot-based, disk or tape backups can take place while applications remain online, and without consuming server CPU cycles.
- **Re-Purposing of Data** - Snapshots can be accessed by other servers for alternate uses, such as application testing, data warehouse updates, content distribution and more.
- **Device Independent** - Snapshots can be created of any data on any storage device, at any interval, enabling protection levels to be aligned with the value of data on each tier of storage.

## multiMirror™ Affordable Disaster Recovery

multiMirror

multiMirror

- **Rapid Resumption of Operations** - Provides immediate access to up-to-date copies of data during and following downtime or outage.
- **Zero-Downtime Backup** - Integrates with multiView to create instant, read/write snapshots of mirrored volumes at any location, enabling non-disruptive backup while applications remain online.
- **Centralized Management** - Controls all mirroring activities from a single console, regardless of the types of servers or storage devices in use.
- **Native IP Mirroring** - Mirrors data over IP with no additional hardware.